



WARRANTY & USER MANUAL

NISSAN SUNNY

TCAT REGISTRATION WARRANTY CARD

NO.

Owner's Name:	Vehicle Registration No.
Tel No:	

Owner's Address:	Delivery Date:
Vehicle Model:	Chassis No:
Engine No:	Serial No:

Dealer's Name and Address (chop and sign)

I have clearly understood and accepted the terms and conditions of this warranty for the purchase of this system and I hereby confirm the system as delivered to me is in good condition.

Date:

Signature:

TERMS AND CONDITIONS OF WARRANTY

This system is guaranteed against all defects in material and workmanship under normal use and service for a period of **3 years** or **100,000km** whichever is earlier from the date of vehicle registration.

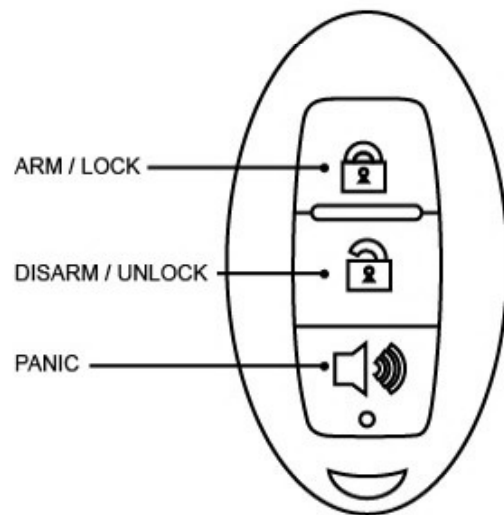
This warranty is subjected to the following terms and conditions:

1. All servicing and repairing, if any, shall be carried out by Tan Chong Motor (Myanmar) Co., Ltd. (TCM MMR) and its authorised workshops or service outlets.
2. Any warranty service or repairing will only be done upon presentation of a valid warranty book duly stamped or signed by any authorised TCM MMR representative.
3. This warranty does not cover any damage caused by improper or negligent use, accident, alterations or repair by unauthorised party or parties, hence no claims shall be entertained by TC Auto Tooling Sdn. Bhd. (TCAT).
4. This warranty does not cover the loss of the vehicle by theft, fire or accident.
5. Warranty shall be void if the security sticker on the module or the serial number printed on the circuit board of the transmitter is removed or defaced or if in the opinion of TCAT that it has been tampered with.
6. Any loss incurred in respect of items / contents placed in the vehicle will not be covered by the warranty and TCAT shall not be held accountable.
7. This warranty shall be limited only to cost of repair or cost of replacement of the defective parts and shall not cover any such other incidental costs incurred by the user.

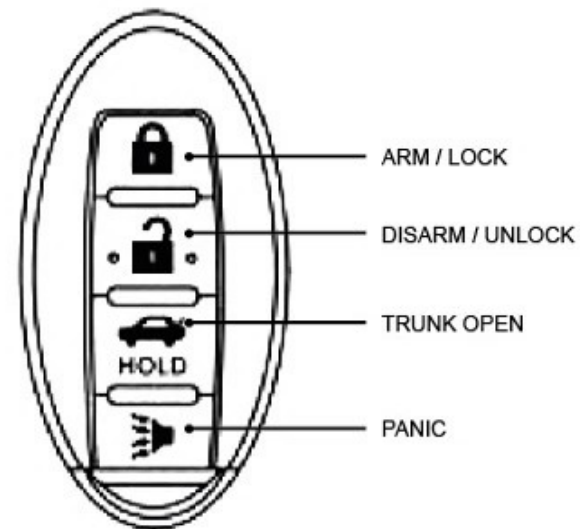
VEHICLE SECURITY SYSTEM

This vehicle is equipped with a high-level security system. It is recommended that even when the alarm is activated, it is good to take a series of precautions when the vehicle is left unattended.

- Never leave valuable belongings in the vehicle.
- Never leave the spare keys in the vehicle.
- Always try to park in a well-lit and safe place.



3 Button Remote Type



Intelligent Key Type

FUNCTIONS & OPERATION GUIDE

1. Arm / Lock (LOCK Button)

Press "LOCK" button to arm. When armed, *central lock* will lock, *siren* beeps once, *hazard light* flashes once and *Arm LED* flashes.

Incorrect closure warning

When the boot or bonnet is not closed properly during lock operation, siren will beep 3 times, but doors will be locked and armed. When any door is not close properly during lock operation, all doors will not BE LOCKED and NOT ARMED. Siren will beep 3 times or buzzer will beep continuously.

Doors / Boot/ Bonnet Zone Protection

When any zone is opened while alarm is in ARMED mode, the siren, horn and hazard lights will be trigger and flash for 45 seconds for 3 cycles. When UNLOCK button on remote is pressed, siren will produce 3 beeps to indicate the alarm was triggered earlier.

To clear the alarm memory, simply turn Ignition to ON and OFF again.

2. Disarm / Unlock (Unlock button)

Press "UNLOCK" button to disarm. All doors will be unlocked, *siren* beeps twice, *hazard light* flashes twice and *Arm LED* light will go off.

3. Panic / Car Finder Function

Press the Horn button on the transmitter to activate the horn. This function can be used to find your car. It also serve as SOS signal during emergencies. Press any button on the transmitter again to switch off the horn.

4. **Emergency Overriding procedure**

A procedure used to reset the alarm system in emergency cases, such as remote control not responding to the alarm or missing.

Follow the steps below:

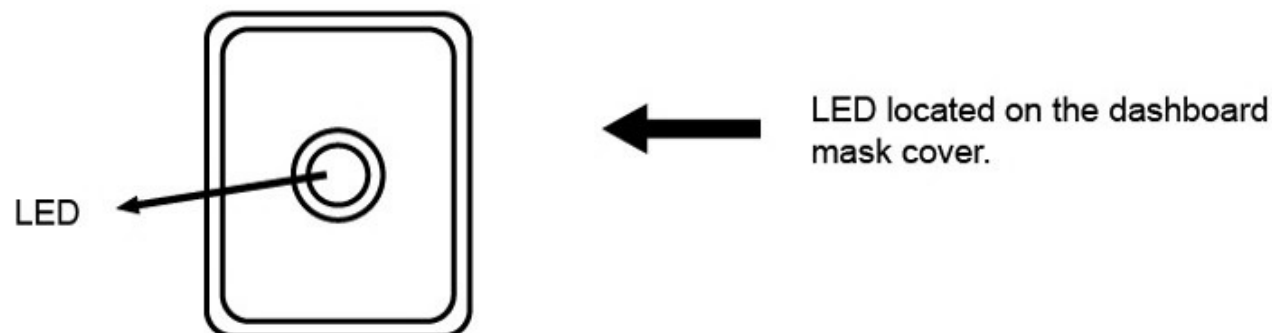
- 1) Manually open the door using car key.
- 2) The alarm will be triggered.
- 3) Turn the car ignition key to 'ON' position.

5. **Auto Rearming/Relocking**

Auto Rearming/Relocking will only function when the alarm system is armed and disarmed for 30 seconds without any door/bonnet/boot been opened. If the central lock is been accidentally unlocked and system disarmed due to interferences, after 30 seconds system is going to arm and lock automatically.

6. **LED Indicator to show the status of the alarm system.**

- i) Arm mode: LED flashes once each second.
- ii) Disarm mode: LED will not be lighted.
- iii) System has been triggered: LED will be lighted. (To clear LED indicator memory; while the alarm is in unlock mode, turn the ignition key to "ON" position and LED should go off immediately.)



How to obtain a new remote controller.

- 1) Contact your nearest TCM MMR workshop requesting for a new remote controller.
- 2) Remember to bring the other spare remote controller in order for it to be learnt together with the new one.

7. New Remote Control learning process. NOTE: FOR 3 BUTTON REMOTE ONLY.

- Step 1 : Use the existing valid remote controller to disarm the alarm system by pressing the “UNLOCK” button.
- Step 2 : Turn the ignition key to “ON” & “OFF” for five times continuously and then stay at “ON”. Thereafter the LED should be blinking.
- Step 3 : Press twice any button of the remote controller to learn, LED will stay on and off for a while to indicate successful learning.
- step 4 : LED will start blinking again ready for the second remote controller to learn. Repeat the same procedure in step 3. A maximum of 3 remote controllers can be learned within a maximum time of 10 seconds duration.
- Step 5 : After completion of learning, please turn off the ignition key to exit the learning process.

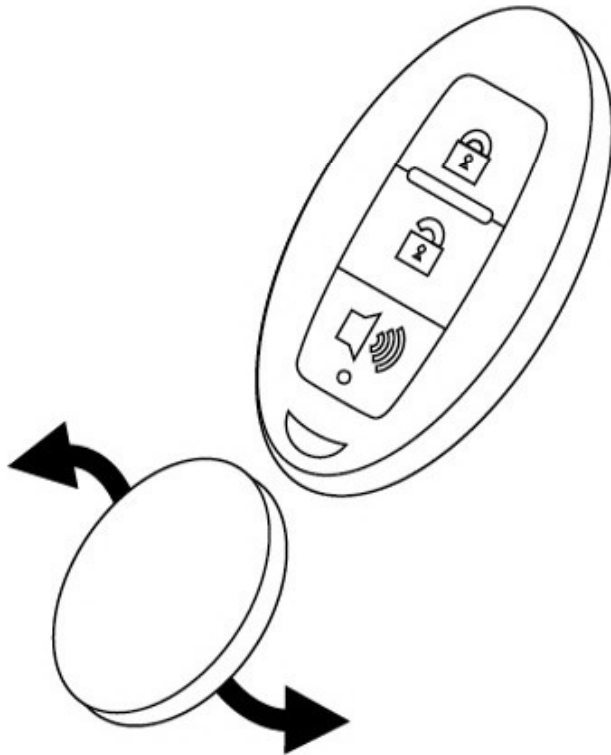
Note: Remember to learn all the remote controller you have within the 10 seconds duration. During learning process, if your present spare remote controller and newly added one are not learned together within 10 seconds, the newly learned remote controller ID will delete or elapse the old remote controller ID. This features can be used to cancel the lost remote controller ID.

REMOTE CONTROL BATTERIES BECOME WEAK

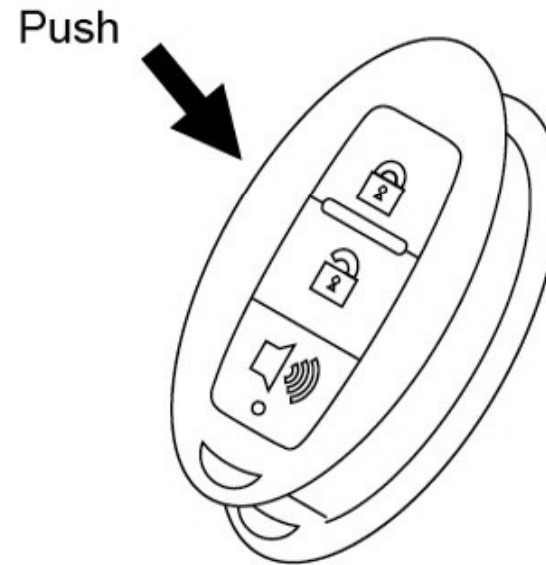
When the remote controller batteries become weak, the operating distance will become shorter and shorter. When this happens, please replace the batteries.

REPLACEMENT OF BATTERY IN THE TRANSMITTER

- i) To change the batteries, use a coin to open the lid as shown in the diagram below.



- ii) Replace batteries in its correct polarity. Push back the casing as shown in the diagram below.



Troubleshooting Guide

<u>FAULT</u>	<u>CAUSES</u>	<u>ACTION</u>
1) Central locking and alarm, both not function.	<ol style="list-style-type: none">1. Door(s) not closed properly.2. Bonnet switch faulty.3. Remote battery low.4. Remote memory lost.5. Remote faulty.	<ol style="list-style-type: none">1.1 Close the opened door(s).2.1 Check the bonnet switch.3.1 Check the battery condition.4.1 Reprogramme memory.5.1 Check remote control.
2) Central locking is working, but not alarm.	<ol style="list-style-type: none">1. Alarm wiring loose.2. Alarm fuse blown.3. Alarm module faulty.	<ol style="list-style-type: none">1.1 Check wiring condition.2.1 Check fuse condition.3.1 Check alarm module.