

Without written consent, any part of this user manual should not be used or re-published in any way. All the products and companies mentioned in the user manual belongs to their own proprietor. Specifications are subjected to change without further notice. This user manual is for reference only: please use the product with caution and self judgement.

USER'S MANUAL

TCDVR 01

WiFi DRIVING VIDEO RECORDER

Table of Contents

Safety Precautions	02 Usage Notice
	03 Micro SD Card Usage
	04 Features
Functions	05 Buttons Definitions
	07 Voice Notifications
	08 Video Recording
	08 Normal Recording
	09 Parking Mode Recording
	09 Emergency Recording
	11 Video Playback using a PC
12 Smartphone APP	
Product	18 Specifications & Standard
	19 Recording Files Quantity (Estimated)
	20 Warranty card

Safety Precautions

Please read this manual in detail and thoroughly. It is important to be aware of the precautions to maintain user safety and to avoid damage to any properties. This product shall be operated as described in the manual.

TC AUTO TOOLING SDN BHD (TCAT) will not be held responsible for any issues as a result of the usage of this product. TCAT will not be held responsible for any loss or damage caused by any accident.

- Do not disassemble, repair, or modify the product yourself.
It can cause fire, electric shock, or malfunction, etc.
- Do not operate the product while driving.
Stop or park your car in a safe place to operate it.
- Do not operate the product with wet hands.
It can cause electric shock.
- Do not cover the product with any material.
It can cause external deformation of the product or fire.
Use the product and peripherals where ventilation is ensured.
- Do not spray cleaning products, water or liquid directly onto the product. Use a damp cloth if cleaning is required.
- Do not use strong chemical cleaning products to clean the lens. It can cause lens surface damage, resulting in poor image quality.

Usage Notice

- While entering or exiting a tunnel during bright daytime driving or very dark environment with insufficient lighting, the quality of recorded video may deteriorate.
- When user enters the menu setting via smart phone, DVR will automatically stop the recording state, and automatically restart the recording after exiting the menu.
- If the product is damaged or the power supply is interrupted due to accidents, video may not be recorded.
- Excessively tinted windshield glass can distort or deteriorate the recorded video quality.
- Prolonged use of the product can increase the internal temperature. Please exercise caution when touching the product.
- Micro SD card has limited write/delete cycles. Users are advised to replace them after yearly usage.
- Clean the camera lens regularly to remove foreign material which will affect the recording quality.

- Do not remove the micro SD card while it is saving or recording!
- Format the SD card before use to ensure proper saving of videos.

MicroSD Card Usage

Refer to the following advice for trouble-free usage of the microSD card.

- It is recommended to format it once a week.
- If the recorded video suffers from break-up, format the microSD card.
- For stable performance, format it by using the DVR smartphone app formatting feature.
- Ensure required files are copied or transfer to smartphone or pc prior to formatting.
- Press and hold the MIC button on the side of the DVR for 3 seconds to format the MicroSD card while recording is stopped.
- Insert or remove microSD card only when the product is turned off to avoid files damage.(when all LED lights are switched OFF).
- Please use original micro SD card with the level class 10 or higher. Low quality micro SD card will cause system collapse, crashing, etc.



WARNING

MicroSD card operates at high temperature while recording. For your safety, please ensure DVR is fully turned off and wait awhile before removing the card.

Features

- 1296P Ultra HD video Recording Default setting : 1080 HD video
- 150 degrees wide viewing angle
- Wireless smart phone connection (iOS and Android)
 - Real time live view function
 - Viewing/Delete of saved files
 - Transfer/Copy files to smart phone
 - Camera setting configuration
- G-Sensor activated recording
- Parking mode recording
- Audio recording
- Date and time recording
- Support up to 32GB microSD card
Minimum requirement : original SD card with Class 10 or higher

Functions

Button Definitions



1. Reset function. Press it once with a needle to reset the DVR.
2. Micro SD card slot.

Name		Recording Mode	Stopped recording Mode
REC (Button 3)	Short Press	Stop recording	Start recording
	Long Press	Snap picture	Snap picture
WIFI (Button 4)	Short Press	Lock/Unlock file	—
	Long Press	WIFI on/off	WIFI on/off
Mic (Button 5)	Short Press	Record Sound on/off	Record Sound on/off
	Long Press	—	Format SD Card
LED (BLUE)		ON: Wi-Fi on OFF: Wi-Fi off Note: Automatically off if no connection within 3minutes	
LED (RED)		ON: DVR turns on / Stop recording Blink: Normal recording mode OFF: DVR turns off	
RES		Reset / Restart the DVR	
Micro SD card slot		Insert / Removing card	

Note: Kindly allow 5 seconds interval when pressing the buttons.



WARNING

- Insert MicroSD Card in correct direction
- Do not insert foreign object in the card slot. It may damage or cause electric shock to the product.

Voice Notifications

- Beep: Unit power on / off
- Beep Beep: G-Sensor / Emergency file recording
Manual lock current video file
- Audio on: Press Mic button to turn on audio recording
- Audio off: Press Mic button to turn off audio recording
- Wifi turn on: Press Wi-Fi button to turn on Wi-Fi network
- Wifi turn off: Press Wi-Fi button to turn off Wi-Fi network
- Format SD card: Press and hold 3 seconds to format SD card
- Insert SD card: MicroSD not inserted, error or corrupted card
- Emergency files full: Emergency files capacity full.(20 files)

Video Recording



WARNING

- Parking mode recorded video will be saved as normal files. To keep the file, please transfer it to other media storage.
- It is not guaranteed to record all incidents. Light impact or vibrations may not activate the impact detection sensor to trigger emergency file recording. To manually lock a video, press Wi-Fi button to lock the file.
- Emergency (SOS) files are limited to 20 files. Delete old SOS files when it is full to ensure new emergency recording can be saved.

Normal Recording Mode

- When the vehicle is started, the DVR will turn on automatically.
- Normal recording is automatically started (Red light blinking) and Wi-Fi turns on for 3 minutes.

Parking Mode Recording (if switched ON)

- After the car is turned off (Red light off), the device will enter parking mode standby status.

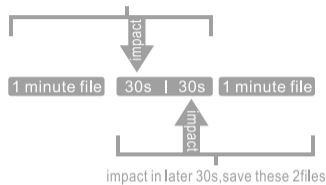
Note

- Parking mode shall be turned on. To turn on or adjust sensitivity of the impact trigger please refer to smartphone app section in this manual.
- In parking mode recording, any strong impact / vibration to the DVR shall trigger the DVR to start recording. It goes back to standby status after it completes the 30s recording.

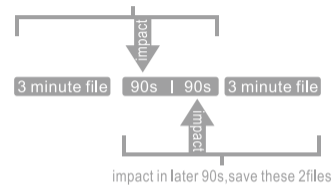
Emergency Recording (G-Sensor Recording)

- If any strong impact is detected while driving, emergency recording is started.
- Emergency recording will store 2 files. Refer to next page for better understanding.

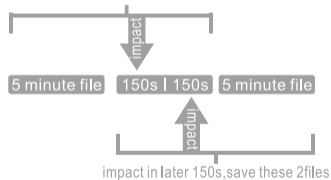
Video length set to 1 minute
impact in first 30s, save these 2 files



Video length set to 3 minute
impact in first 90s, save these 2 files



Video length set to 5 minute
impact in first 150s, save these 2 files



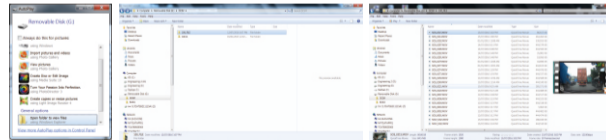
Video Playback using a PC

Recorded videos can be played back with a PC.

- Insert the micro SD card into a USB card reader.(not provided)
- Insert the card reader to the PC's USB port.
- Open an application (such as Windows Media Player) to play back recorded videos from the micro SD card.

Note

- If there are many recorded videos in the micro SD card, it may take a long time to load the files.
- Method to play back recorded videos may differ between multimedia applications.



Smartphone App

Installing the application.

The TCAT WIFI DVR application can be downloaded from the following links. Alternatively, scan the QR codes below.

For iOS:

<https://itunes.apple.com/us/app/tcat-dvr/id1137061112?l=zh&ls=1&mt=8>



For Android:

https://play.google.com/store/apps/details?id=tw.com.TCAT_WIFI_1_6_3

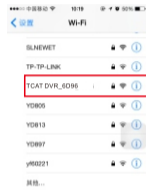


Note

- Android may prompt user to grant special permission to install this application. Kindly enable this function.
- Features and functions may differ according to versions and phone operating systems. Eg: Android and iOS.

Connecting to the DVR's WIFI Hotspot

- Switch on smartphone's wifi connection.
- Browse networks for TCAT DVR_XXXX
- Enter wifi default password "1234567890"



TCAT+WIFI+DVR

TCAT DVR_6D96

1234567890

Show password

Show advanced options

CANCEL CONNECT

Note: When connecting to the DVR's Wifi, your phone internet data connection will be disabled.

Start the application



TCAT DVR

Using the application



-- Camera Settings



-- Save in DVR/Phone



-- Browser for saved files

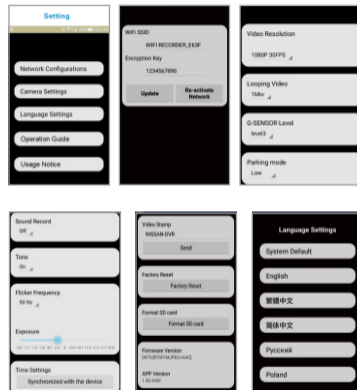


-- Start /Stop Video recording



-- Toggle Video recording/ Photo capture mode

Using the application



● Network Configurations:

Modify hotspot settings

● Camera Settings:

Video Resolution:from 720P to 1296P
Looping Video:off/1Min/3Min/5Min,
G-SENSOR Level:Off/level1(Low)/level2/level3/level4/
level5(high).

Parking mode:off/low/middle/high.

Sound record:On/Off.

Tone:On/Off.

Flickering Frequency & Exposure:It has been tuned to the optimum settings, Not recommended to be modified.

Time setting:Tap this to synchronize the DVR with the phone's time.

Video stamp:You can edit the text that appears on the recorded video.

Factory Reset:Tap to reset all settings to default values.

Format SD card:Tap to fully erase all contents on the SD card.

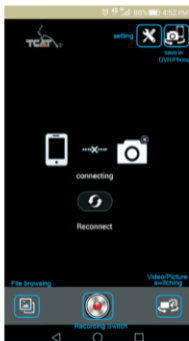
Firmware version & App version:The installed versions are displayed here.

● Language Settings:

Select languages you would like to display

Operation guide

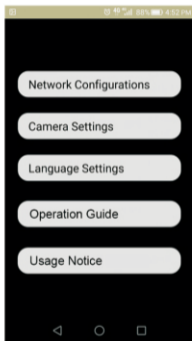
Camera preview interface



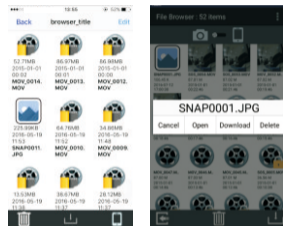
File browsing



Setting



Browser for Saved files



- Press to select file, choose Cancel, Open, Download or Delete.

Note

- When the phone is disconnected from the DVR WIFI for 3 minutes, the WIFI hotspot will automatically switch OFF.

Product

Specifications & Standard

Model Name	TCDVR01
Memory	Max 32G
Camera	OV4689 Sensor
Viewing Angle	Horizontal 150°
Resolution	1296P 30FPS, 1080P30FPS, 720P60FPS, 720P30FPS
Image Quality	High, Normal
Video Format	MOV
Video Record	Loop Record
Wi-Fi	Built-In, 802.11b/g/n
Speaker	Built-In
LED Indicators	WIFI, Recording
Button	Rec, WIFI, Mic
Input Power	9~16V
Operation Temperature	-20°C ~85°C
Storage Temperature	-40°C ~85°C
Certificates	UNECE R10
Application	Android4.2 & Higher, iOS 7 & Higher

Recording Files Quantity (Estimated)

Storage	Resolution	Size of the Video (1min)	Maximum of the Quantity	Size of the Video (3min)	Maximum of the Quantity	Size of the Video (5min)	Maximum of the Quantity
8G	1296P 30FPS	93M	78	278M	24	463M	13
16G			160		51		29
32G			315		103		61
8G	1080P 30FPS	88M	83	261M	26	435M	14
16G			169		55		31
32G			333		110		65
8G	720P 60FPS	61M	121	170M	41	291M	23
16G			245		85		49
32G			482		171		98
8G	720P 30FPS	35M	213	121M	59	162M	43
16G			429		121		90
32G			842		241		179

WARRANTY CARD

This system is guaranteed against all defects in material and workmanship under normal use and service for a period of 3 years or 100,000 km whichever is earlier from the date of vehicle registration.

For systems purchased and installed AFTER vehicle registration, warranty is limited to 3 years or 100,000KM whichever is earlier from the date of installation.

Owner's Name:	Owner's Address:
Tel No:	Vehicle Registration No.
Delivery Date:	Vehicle Model:
Chassis No:	Serial No:

Selling Branch or Dealer's Name and Address
(chop and sign)